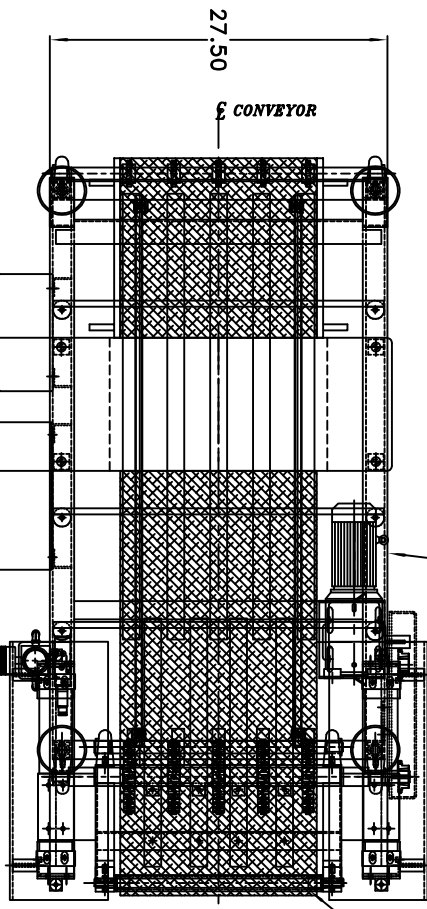


FRAME CONSTRUCTION: #304 STAINLESS STEEL,
FULLY WELDED SQUARE SECTION TUBING



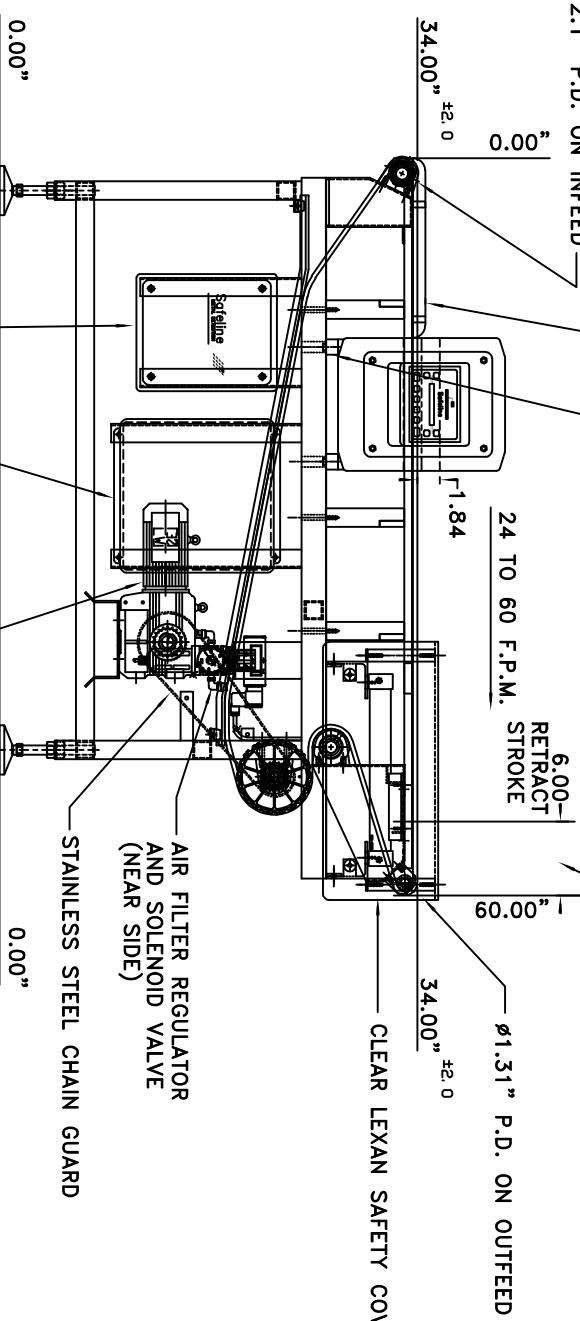
16.00" WIDE, REX MATTOP CHAIN, SERIES 2100,
POLYPROPYLENE BELTING

ON DETECTION OF METAL THE OUTFEED END
ROLLER WILL RETRACT 6" TO CREATE A GAP
IN THE LINE INTO WHICH CONTAMINATED PRODUCT
WILL FALL

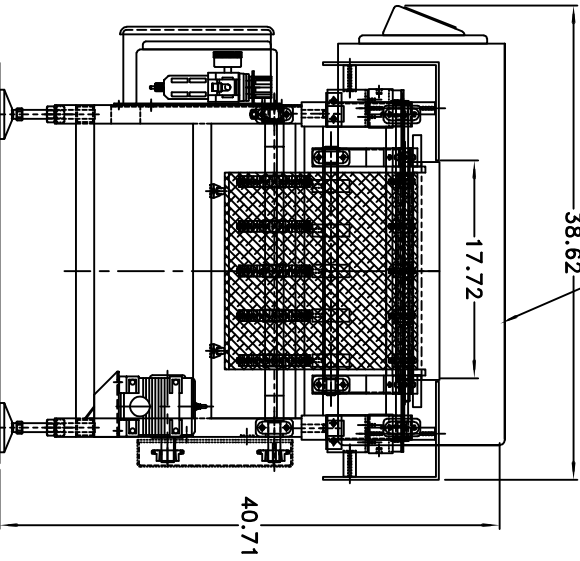
- ENGINEERING NOTES:
- 17.63 x 1.75 IS THE MAXIMUM USABLE PRODUCT OPENING THROUGH THE DETECTOR APERTURE
 - CUSTOMER TO PLEASE SPECIFY A REX BELT SERIES DESIRED.

SAFELINE POWERPHASE METAL DETECTOR: STAINLESS STEEL WASHDOWN CONSTRUCTION, WITH 18 X 3 APERTURE, 300-800 KHz MULTI-FREQ. (17.63 X 1.75 USABLE PRODUCT OPENING) WITH EXTERNAL PRINTER PORT & PERFORMANCE VALIDATION ROUTINE

ATTN SHOP: USE STANDARD HEAD MTG
BLOCKS IN PLACE OF RUBBER
POWERPHASE BUSHING



ADJUSTABLE LEVELING PADS ±2.00



REVISIONS

ITR	E.C.N.	BY	DATE	CK
A	NEW DRAWING	M.S.	9/16/98	
B	REV DRIVE, 2.1 PD IM	LKB	9/29/98	

DETECTOR AND CONVEYOR CONTROLS ARE LOCATED AS SHOWN ON THE RIGHT WHEN VIEWED FROM THE INFEED

Scale: 1/8" = 1'-0" (AS SHOWN)

<p>THE ENGINEER AND HIS FIRM, DEVELOPER, CONTRACTOR, AGENT OR CONSULTANT, SHALL BE RESPONSIBLE FOR THE DESIGN AND CONSTRUCTION OF THE SYSTEM SHOWN ON THIS DRAWING AND FOR THE PROTECTION OF THE PATENT RIGHTS OF THE CLIENT AND THE PROTECTION OF THE PATENT RIGHTS OF THE ENGINEER AND HIS FIRM.</p>	
<p>UNLESS OTHERWISE SPECIFIED, DIMENSIONS IN INCHES (FRACTIONS) SHALL BE TO THE CENTER UNLESS OTHERWISE SPECIFIED.</p>	
<p>UNLESS OTHERWISE SPECIFIED, DIMENSIONS IN METERS (FRACTIONS) SHALL BE TO THE CENTER UNLESS OTHERWISE SPECIFIED.</p>	
<p>INTERFERING, SPARKING, AND INTERFERING DEVICES SHALL BE PROHIBITED FROM BEING INSTALLED IN ANY MANNER THAT MAY INTERFERE WITH THE OPERATION OF THE SYSTEM.</p>	
<p>AT WAC REQUIRED FOR RELATED FEATURES.</p>	
<p>APPROVAL DRAWING J. M. SMUCKERS</p>	
<p>SAFELINE METAL DETECTION</p>	
<p>6005 Benjamin Road, Tampa, FL 33634</p>	
SCALE:	CUSTOMER:
1/8"	13187-01
DRAWN BY:	DATE:
N.S.	9/16/98
CHECKED BY:	ENGINEER:
REV:	DRAWING NO.:
B	271-3187